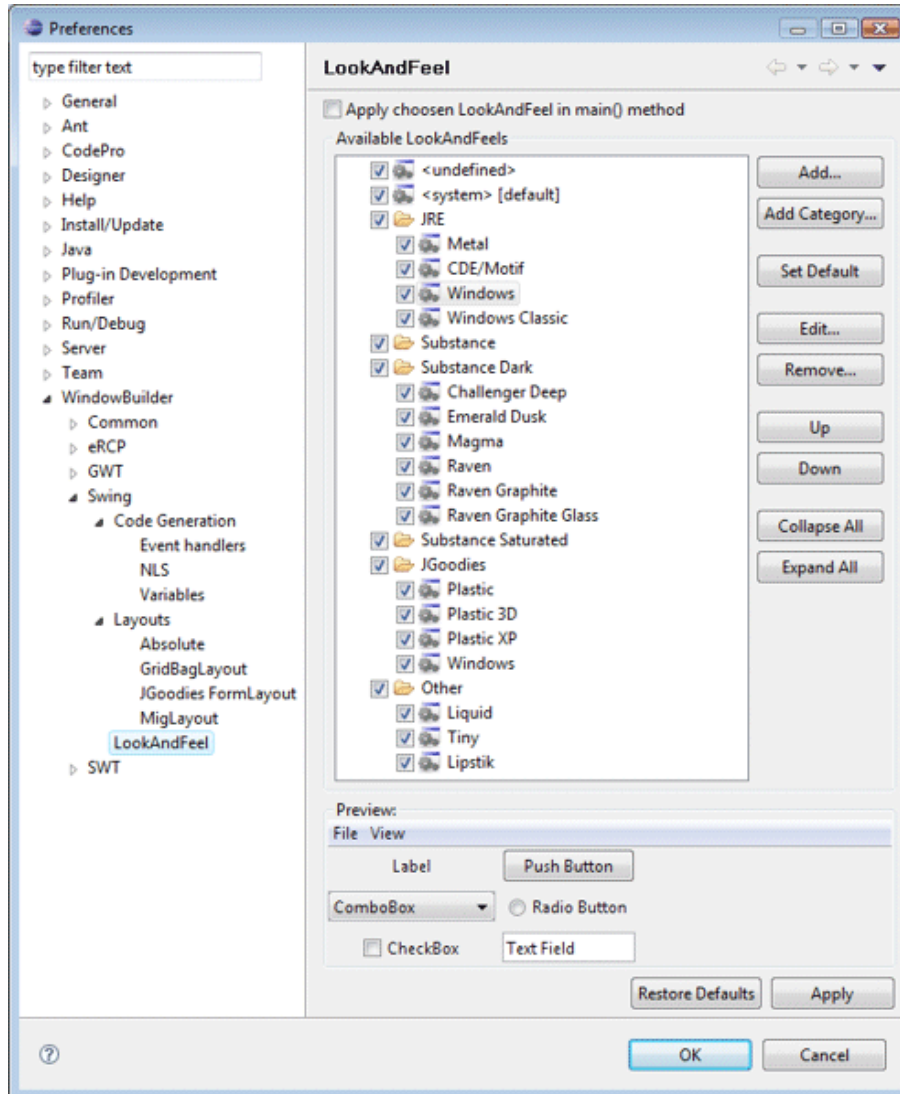
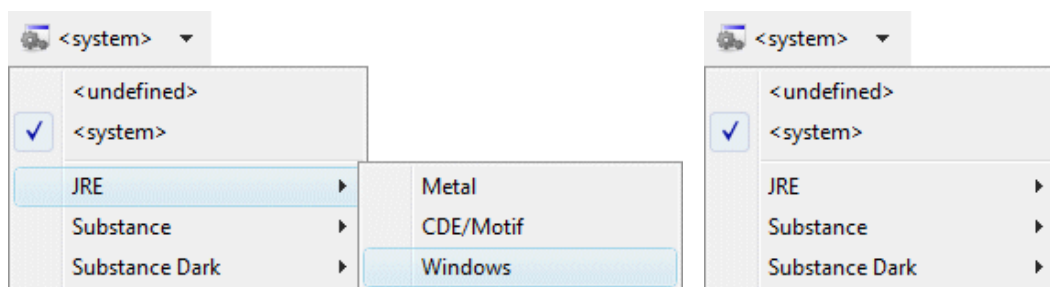


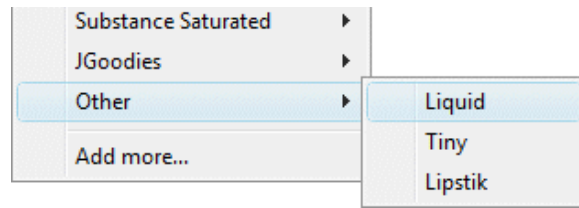
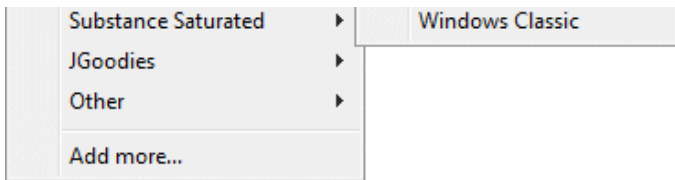
Preferences - Swing > LookAndFeel



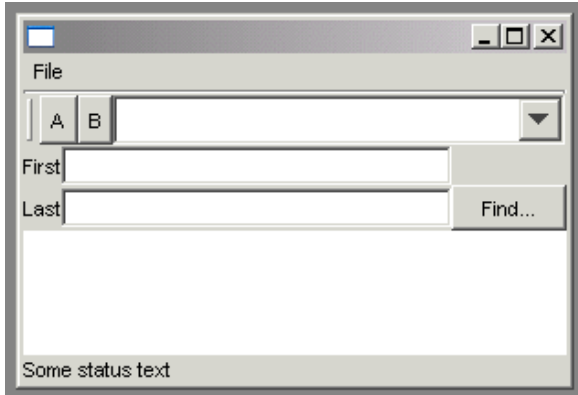
This page is used to control various **Swing > LookAndFeel** options.

Any look and feel types listed on this page will show up in Designer's toolbar in the look and feel drop down list.

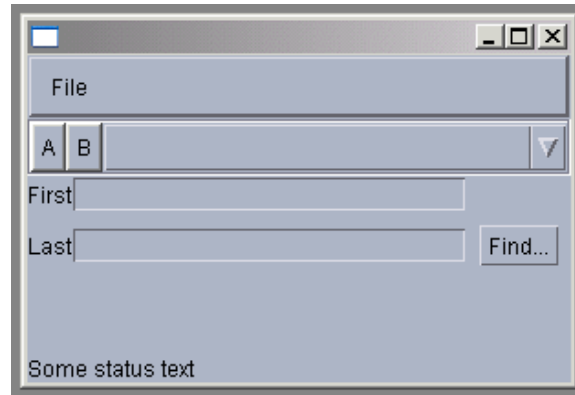




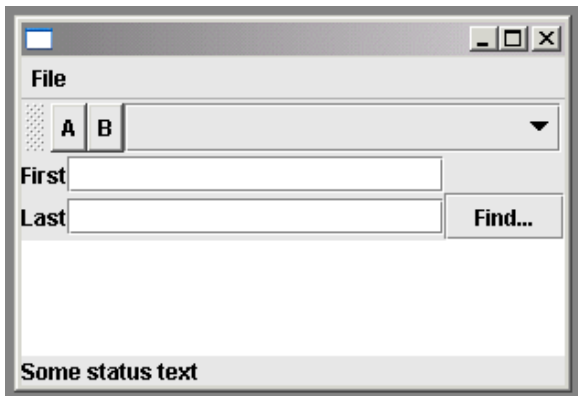
Windows



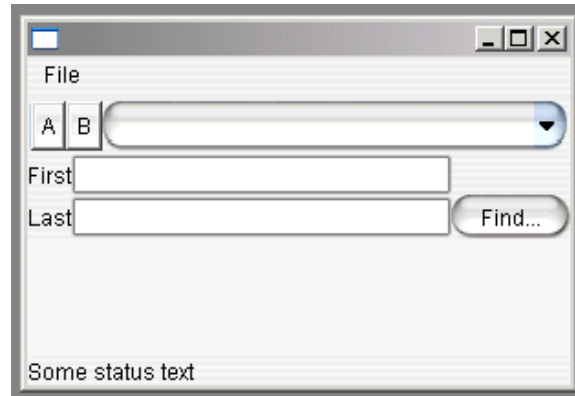
Motif



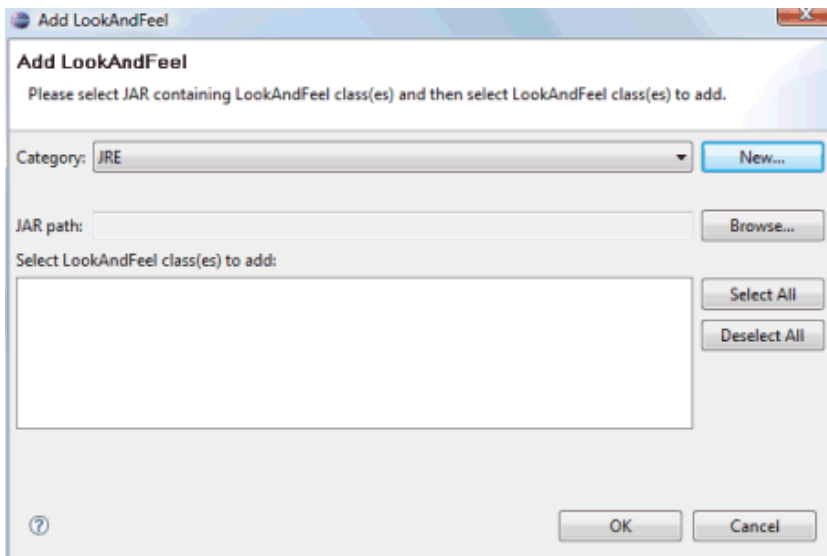
Metal



Liquid



You can add more looks by clicking on the **Add** button and specifying the look you want to add in the **Add LookAndFeel** dialog that appears. To edit a look, select it and click on **Edit**. To remove a look, select it click on **Remove**. To set a look as the default look used in Designer, select the look and click on the **Set Default** button.



Apply chosen LookAndFeel in main() method

This preference determines whether Designer adds code to set the selected Look and Feel in the main() method. For example:

```
try {  
    UIManager.setLookAndFeel("com.jgoodies.looks.windows.WindowsLookAndFeel");  
} catch (Throwable e) {  
}
```